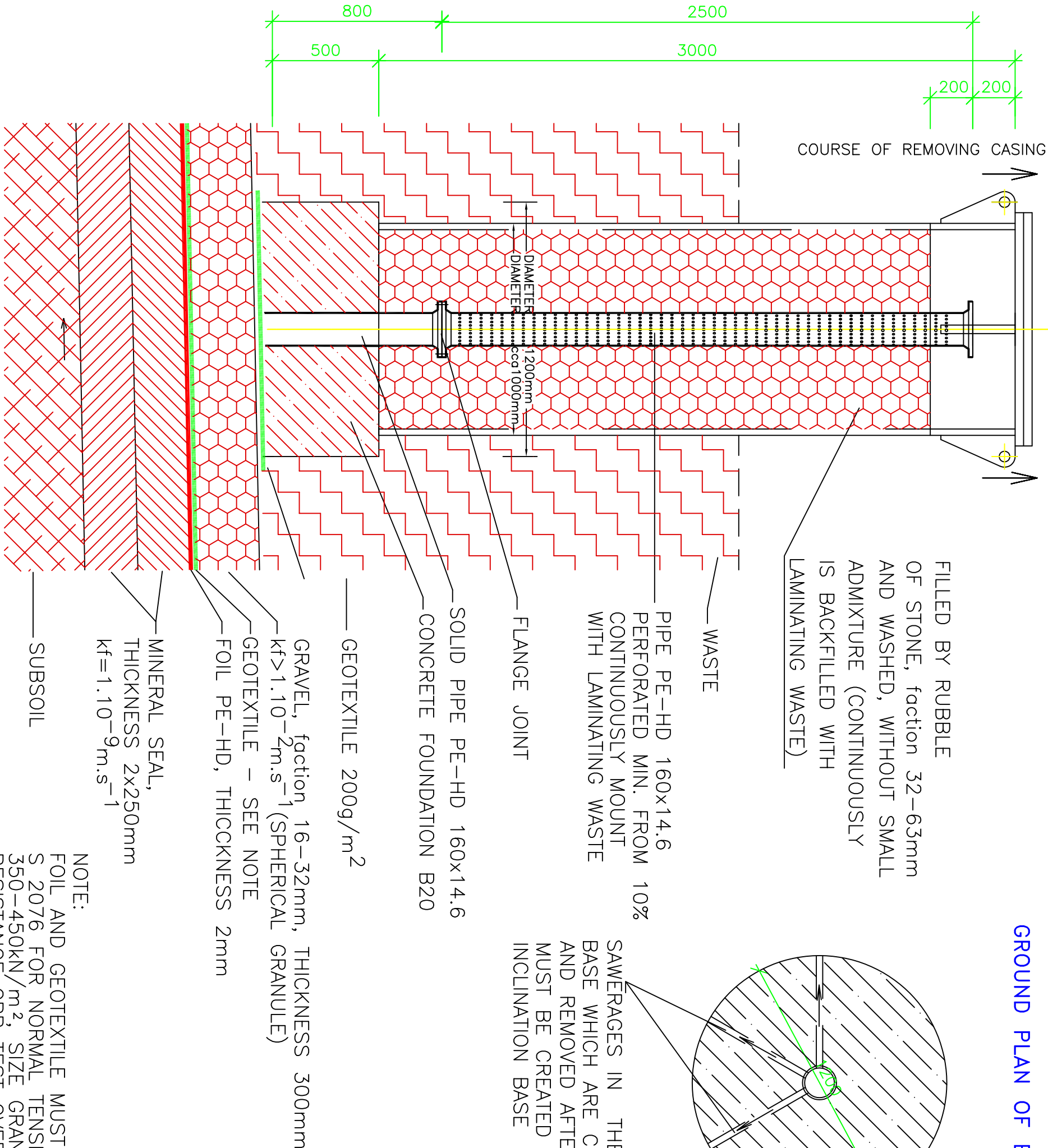
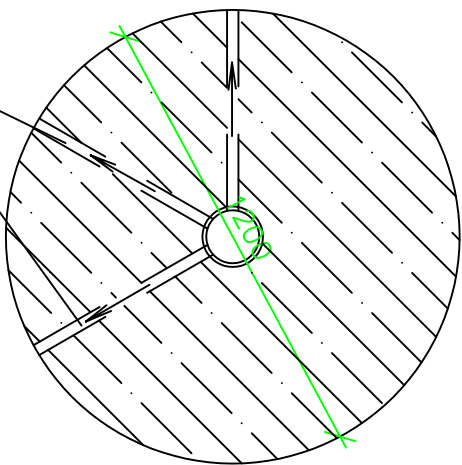


GAS WELL FOUNDATION

SECTION

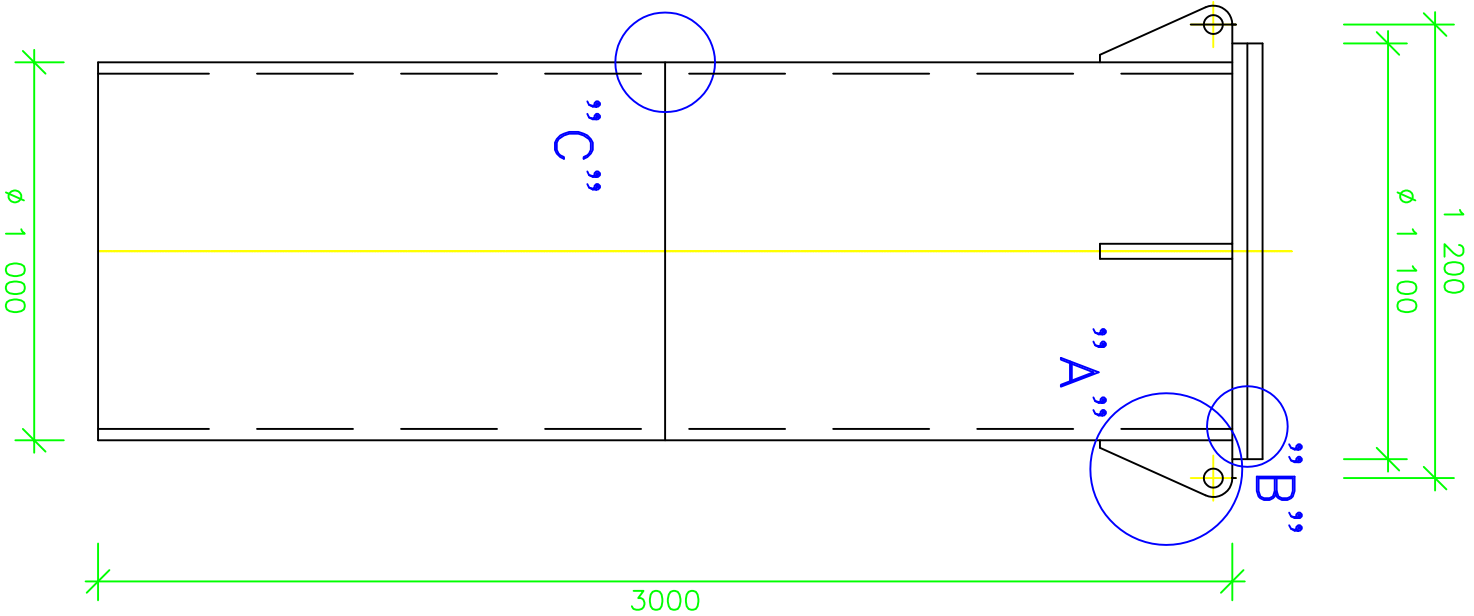


GROUND PLAN OF BASE

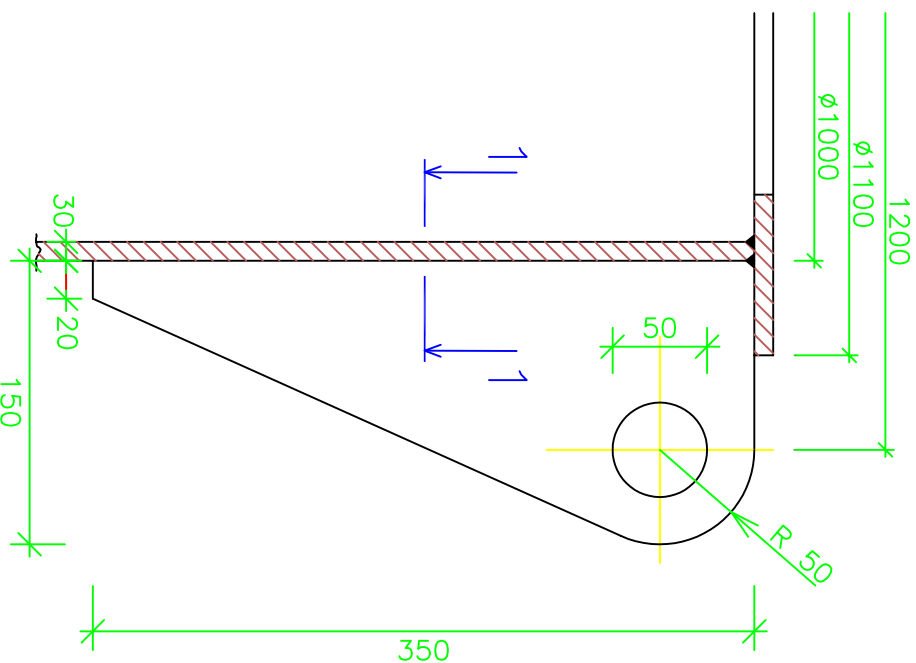


SAWERAGES IN THE BOTTOM CONCRETE BASE WHICH ARE CREATED AFTER HARDEN CONCRETE AND REMOVED ONLY TO INCLINATION BASE

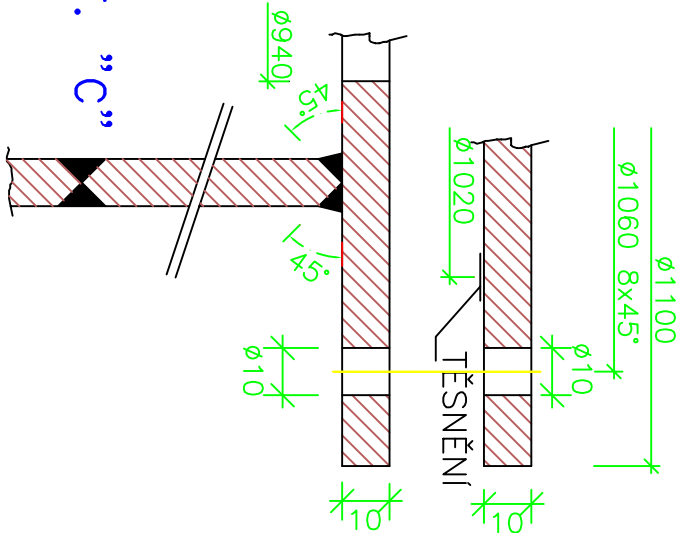
MOVING FORM FOR THE GAS WELL WITH A CAP



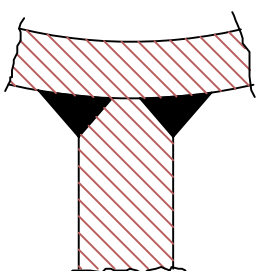
DET. "A" – TENSILE LOOP  
SCALE 1:5



DET. "B"

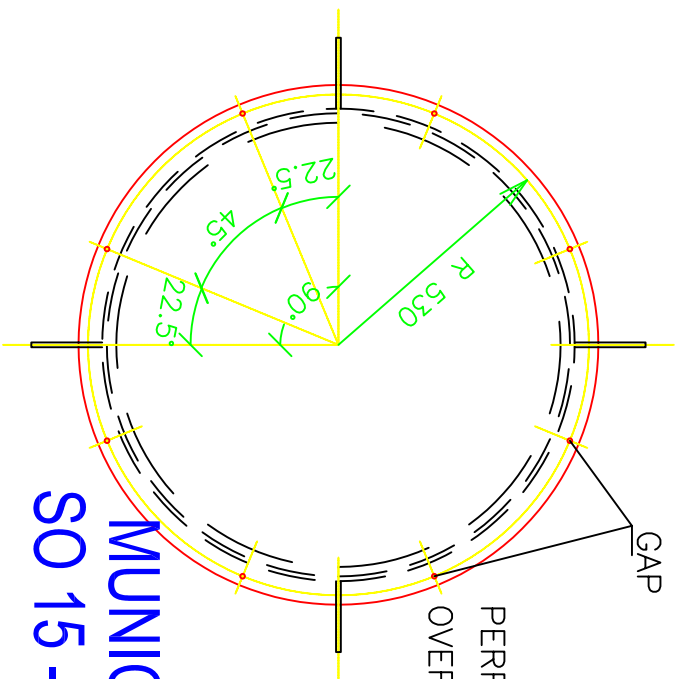


DET. "C"



SECTION 1–1

GROUND PLAN OF CAP



PERFORATION IS MOVED ABOUT 22.5° OVER AGAIN'S AXIS OF TENSILE LOOP

MUNICIPAL WASTE DUMP ARAD  
SO 15 - WASTE DUMP DEGASING  
GAS WELL FOUNDATION, CASING

SCALE 1:20, 1:5